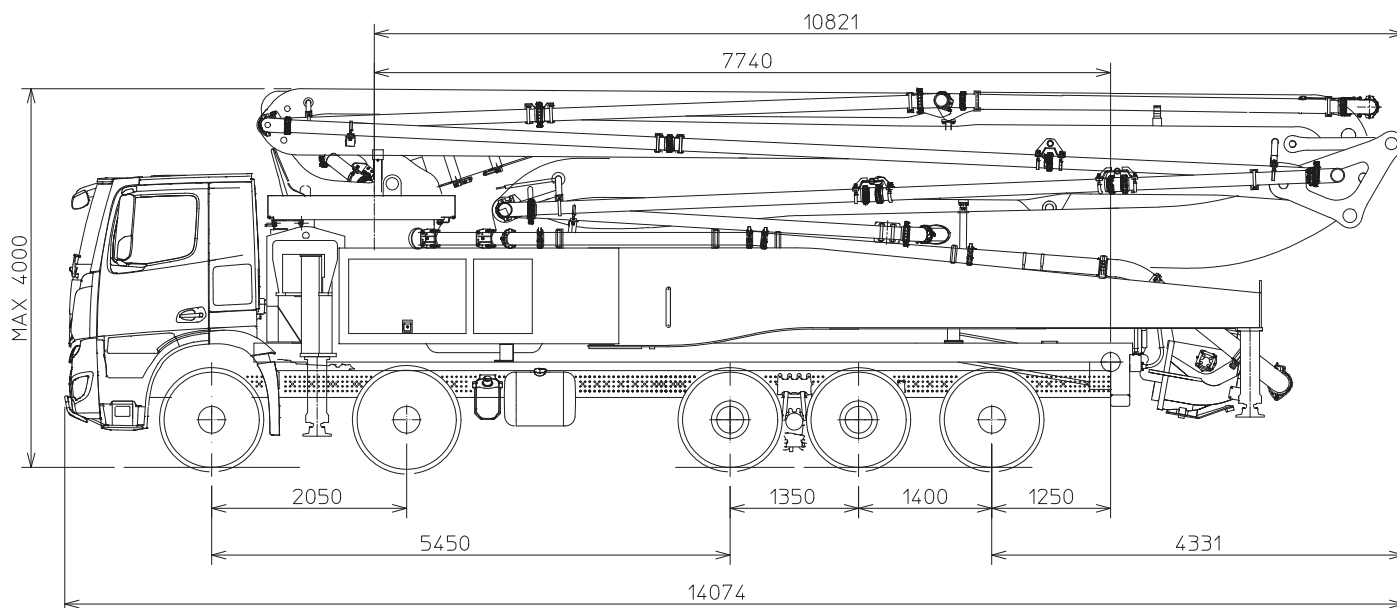


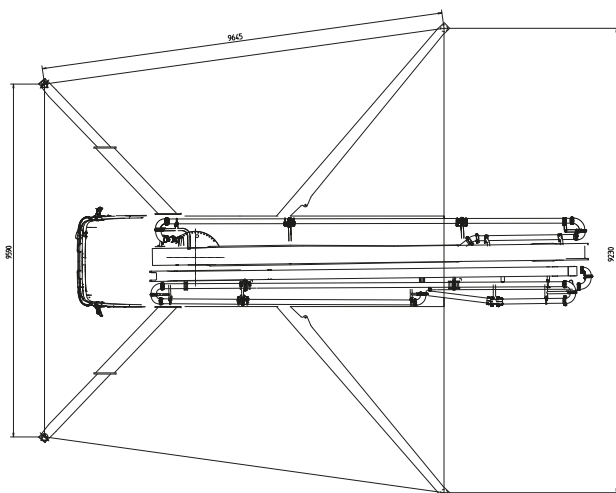
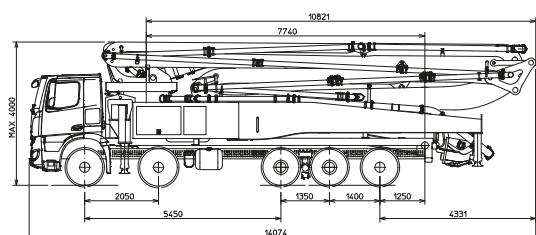
Easy to use
High-efficiency pumping unit
6-section boom

TRUCK-MOUNTED CONCRETE BOOM PUMP

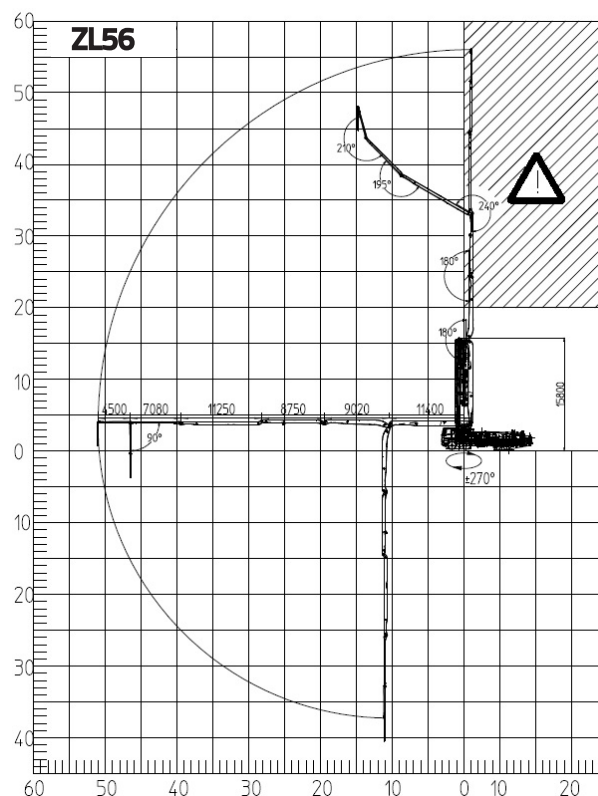
| | |
|--------------|-----------------------|
| Placing boom | ZL56 |
| Pumping unit | 1808 |
| Driven by | Truck PTO or Gear box |
| Chassis | 5 axles |



Dimensions



Dimensions varying according to truck assembly



Standard equipment

Placing boom 6RZ 56/52 with 6 sections, "RZ" folding system
 Concrete delivery pipes: Double layer type, inner layer 63HRC
 Two proportional radio remotes, 3 joysticks
 Concrete hopper with agitator
 Vibrator on hopper grid
 Centralized lubrication system for pumping unit
 Wear components: S-valve, wear plate and cutting ring with hard-carbide inserts. Delivery cylinders: chrome-plated
 7" colour LCD machine-management display
 ZLSC Zoomlion Stability Control
 Water tank 600l
 Water pump (130 bar - 20 l/min)
 Side marker lights
 4x support plates and casing
 Rear steps, left and right side
 Handrail on rear steps
 Horn on the boom
 Closed boom warning device
 Painting: Zoomlion 3-colors
 EU road approval kit (sidebars, rear protection)
 CE certification & documentation
 2 Use & Maintenance manuals

Main Parameters

Pumping unit

| | | |
|-------------------------------------|------|----------|
| Model | | 1808 |
| Maximum theoretical output | m³/h | 180 |
| Maximum pressure on concrete | bar | 83 |
| Concrete cylinders (diam. x stroke) | mm | 260x2100 |
| Concrete hopper capacity | l | 600 |
| Hydraulic circuit | | Closed |

Boom

| | | |
|---|-----|-----------|
| Model | | 6RZ 56/52 |
| Pipeline diameter | mm | 125 |
| Maximum vertical reach | m | 56 |
| Maximum horizontal distance (from center of slewing axis) | m | 51 |
| Minimum unfolding height | m | 15.8 |
| Number of sections | No. | 6 |
| 1 st section opening angle | ° | 90 |
| 2 nd section opening angle | ° | 180° |
| 3 rd section opening angle | ° | 180° |
| 4 th section opening angle | ° | 240° |
| 5 th section opening angle | ° | 195° |
| 6 th section opening angle | ° | 210° |
| Rotating angle | ° | +/-270 |
| End hose length | m | 3 |

Technical data and characteristics subject to modifications without notice